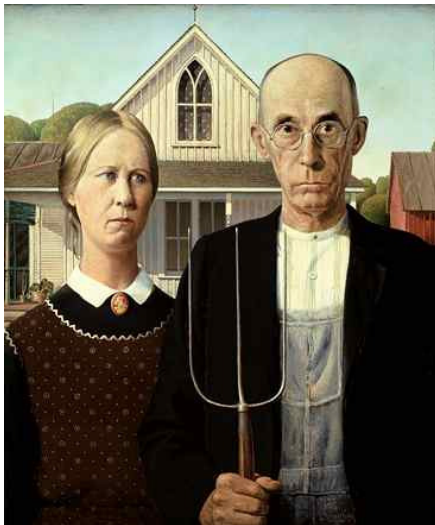




Monthly Competition

Last month's picture was a detail from "The Bedroom at Arles", by Vincent Van Goch. I had correct answers from **Bob Seel, Russell Eaton, Carole Hawthorne** and **Sam Leigh**.

This American work of art is featured as a four-times life-size statue in the same city where the painting is exhibited. Can you name the artist, the title of the work and the city? Answers to **Roland** please by the end of June. The answers and names of correct submissions will be published in July.



Membership News

I am sad to report the death of **Edith Ellen Sutton**, who had been a member for 19 years. She had served on the Committee and was always keen to take part in exhibitions and competitions.

We welcome new member

Christine Clementson from **Leigh**

Annual Subscriptions were due on 1st May. Don't forget that at the AGM last year it was agreed that there shall be just one month for members to pay subscriptions. The majority of members have renewed their membership, but if you've not paid by the time you read this, we have to assume that you no longer wish to remain a member. You won't hear from us again. Membership Secretary is **Kevin Gillibrand**, 191 Henfold Road, Astley, Tyldesley, Manchester M29 7FU. (Tel 01942 879105)

If you have an email address and haven't yet told our Secretary, please do so asap. It will save your Circle postage costs, and you'll get this IN COLOUR. Send Roland an email asap on secretary@boltonartcircle.org.uk 105 of our 189 members are "on-line".

Demonstrations

Member **Ted Holden** gave us another of his exhilarating demonstrations last month, achieving the production of two paintings during the evening. Our Demonstration Secretary commented that it was a pity that **Ted's** efforts could not

have been recorded on DVD for posterity, so that we could re-live the evening.

The next demonstration will be on June 8th when Paul Talbot-Greaves will be showing us how he achieves Light and Shade in his Watercolours.

All demonstrations take place in the Bruce Room at Highfield on the second Tuesday of the month starting at 7.30 pm. Contact **June Catterall** for more details on 01204 840191.

Trip to Patchings

Our biennial visit to this fantastic art festival in Nottinghamshire takes place on Friday 11th June. Social Secretary **Jean Faulkner** had to change the Coach to a 48 seater due to the demand. At the time of writing, I believe there was the odd seat left. So if you want to see if there is still room or there are any cancellations, contact **Jean** on 01204 460832 or Joint Social Secretary **Jean Steele** on 01706 281655.

Jean has particularly asked that when people park their cars at Highfield Community Centre, they leave room for the coach to turn round in the Car Park.

Remember..the Coach leaves Highfield Hall at 08.30 am prompt.

Exhibitions – Past, Present and Future

- ❖ There was a good turnout at the **Highfield Exhibition** on 25th May. It went very well even though your Secretary made a hasty unplanned retreat to RBH. Thanks to all the organisers and helpers.
- ❖ For reasons beyond our control, there will be no exhibition in **Bolton Parish Church** this year.
- ❖ The early May **Art-In-The-Precinct** Exhibition was not as successful as anticipated. It was thought that the weather, being unseasonably cold, had kept many people away. The much publicised Mayor's Mile event on the Sunday was a non-event with seemingly only a handful of "walkers" taking part and very few spectators. The next AITP will be at the end of August.
- ❖ A trial exhibition was held at **Holland's Garden Centre**, Bromley Cross, on Saturday 24th April with **Sue Hestford, Lynne Frost, and Paul and Norma Titterton**. **Paul** had successfully modified the stands into "A-Boards". Your committee has agreed that, as a trial, the above mentioned artists take it a stage further and arrange small groups of members who can exhibit there on a rota. Each Group Leader, would be entirely responsible for their weekend, including which artists will be present, setting-up, hook provision, etc., and directing people within the garden centre. Details will be sent out to members to see how many are interested. If it proves popular we could have a rota, or even a waiting list of members wishing to exhibit there. It could benefit both us and the Garden Centre.

EDITOR'S FOOTNOTE Items for this publication should be sent by mail, email, or by hand to your Secretary, Roland Arthur, 45 Sherbourne Road, Heaton, Bolton, BL1 5NN. Tel 01204 847607. email bac@rebarthur.f9.co.uk