

Bolton Art Circle

www.boltonartcircle.org.uk



In Touch

June 2009



Monthly Competition

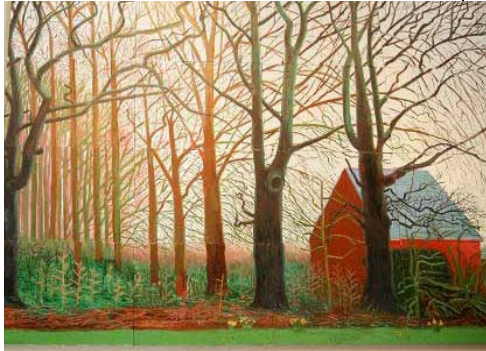
Last month's picture was "Doge Leonardo Loredon" by Giovanni Bellini; painted in 1501.

I had correct answers from **Geoff Brazier, Edith Ellen Sutton and Beryl Rushton.**

This month we have a detail from a large painting by a contemporary British artist. Can you name the artist and the title of the work?

Answers to **Roland** please by the end of June.

The answer and names of correct submissions will be published in the July edition.



Membership News

We welcome new members:-

Steven Critchley from **Horwich**

Stephen Cope from **Farnworth**

Tim Aston from **Horwich**

Mary Lee from **Egerton**

Scott Bird from **Farnworth**

Have you renewed your membership?

Annual Subscriptions were due on 1st of May.

If you haven't paid your subs. by the 1st June, we can only assume that you no longer wish to remain a member, and you will not hear from us again!

If it's just been an oversight, please contact our Membership Secretary, **Kevin Gillibrand** asap. (191 Henfold Road, Astley, Tyldesley, Manchester M29 7FU. Tel 01942 876105) *If you have an email address and haven't yet told our Secretary, please do so asap. It will save your Circle postage costs, and you'll get this **IN COLOUR**. Send Roland an email asap on secretary@boltonartcircle.org.uk Many of our 186 members are "on-line".*

Sketching in the Garden and Hockney

On Thursday June 11th there will be a lunch, (12.30.) at Park Farm Garden Centre, on Walmersley Road, Bury. Including sketching in the garden. (Please bring your own chair if you are sketching.) Details and map are on the Highfield notice board. Arrive when you like. The meals are "something special", so cut down on your breakfast!

Don't forget the coach trip to Saltaire on Tuesday 28th July including David Hockney's art gallery Details later.

Demonstration News

Last month's Pastel demonstration by Diane Chaffer was interesting. She is a talented artist, but unfortunately she needed to work right in front of her picture, which made it difficult for the 45 people present to see what she was doing.

This month, on Tuesday 9th at 7.30, we have our own member **Ted Holden** who will be demonstrating how he approaches "Skies, Seas and Coasts". Our Demonstrations are open to anyone interested in art. For more details contact Demonstrations Secretary **June Catterall** on 01204 840191.

Exhibition Secretary

Post still vacant.....ANY OFFERS ??????

Church Heritage Week – Exhibition and Challenge

Bolton Parish Church Sat.20th to Sun 28th June
Details about Exhibition entry requirements are on display at Highfield. A précis is:-

We need 40 pictures, and there will be public daily/evening concerts 20% of sales to Church charities. Artists limited to one picture per person. Overall dimensions must NOT exceed 24" x 18". All work must be strung using 'D rings **BEFORE** bringing your pictures

to Highfield during Thursday evening's workshop on the 18th. June, ready to be hung the following morning. Please take your own picture wrappings back with you to be used when pictures will be available for collection from Highfield during Monday's workshop on 29th June.

All work must be labelled on the back with your details including picture title, name, medium and price.

For more information, please contact Paul or Norma Titterton on 01942 814437

Painting Challenge Event Sat 20th June

All members are welcome to take part in this event, which will take place around the Church grounds and the lower end of Churchgate. Similar to those at Smithills Hall, Moses Gate Country Park and Turton Tower. This time we are sure you will find some interesting subject matter to paint, whether it's an old Church doorway, or the Churchgate shopping area or even part of the Medieval Re-enactment event in the Church grounds!

You should be ready to start painting at 10 a.m. sharp, and to stop at 3pm. All this is subject to the weather on the day. For more information, contact **Paul and Norma Titterton** (01942 814437)

Fighting for our pictures at the Hospital

You'll be interested to learn that we recently had two members of the public after the same picture by member **Michael Brannan**. The highest bidder won the day.

Christmas?..... Not already !

Just to let you know that we shall be holding our popular Christmas Dinner Dance at the Ridgmont in Horwich.

Highfield Hall Committee

As regular users of the building, we need to attend their Committee meetings (last Monday each month). If anyone would like to take this interesting task on, please contact any of our Committee Members.

EDITOR'S FOOTNOTE Items for this publication should be sent by mail, email, or by hand to your Secretary, Roland Arthur, 45 Sherbourne Road, Heaton, Bolton, BL1 5NN. Tel 01204 847607. email bac@rebarthur.f9.co.uk